



**encounter**  
RESOURCES LIMITED

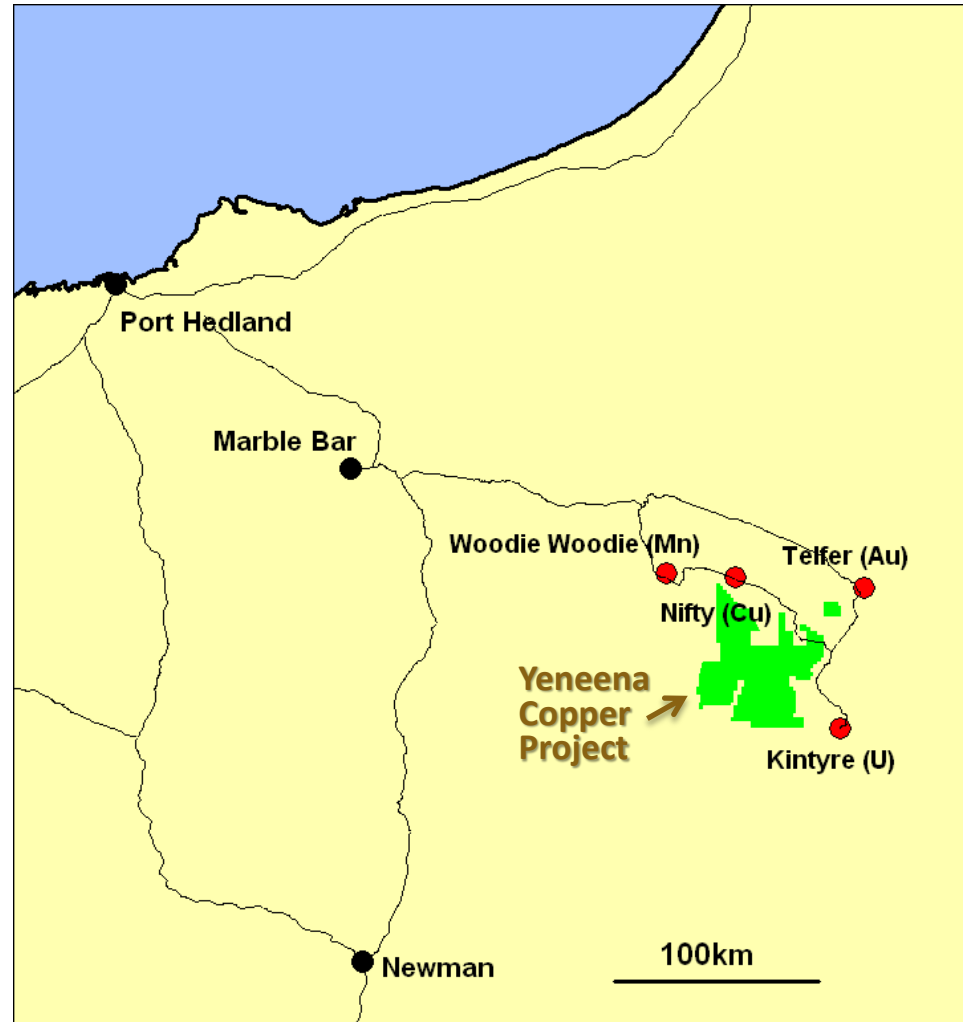
# AMEC Convention

3-4 September 2013  
Perth, Australia

ASX : ENR

# INVESTMENT SUMMARY

- Major land position in Proterozoic sedimentary basin (1900km<sup>2</sup>)
- Surrounded by major mineral deposits (Au-Cu, Cu, U and Mn)
- Greenfields copper discovery 11km long and growing
- Experienced team of former WMC executives
- Well funded explorer - US\$20m farm-in with Antofagasta (two tenements, 25% of Yeneena)



# CORPORATE INFORMATION

## Board



Paul Chapman - Chairman

Will Robinson - Managing Director

Peter Bewick - Exploration Director

Jon Hronsky - Non-Executive Director

Kevin Hart / Dan Travers - Company Sec.

## Issued Capital

132.5m Ordinary Shares

9.5m Employee Options

## Market Cap.

A\$33m @ A\$0.25/share

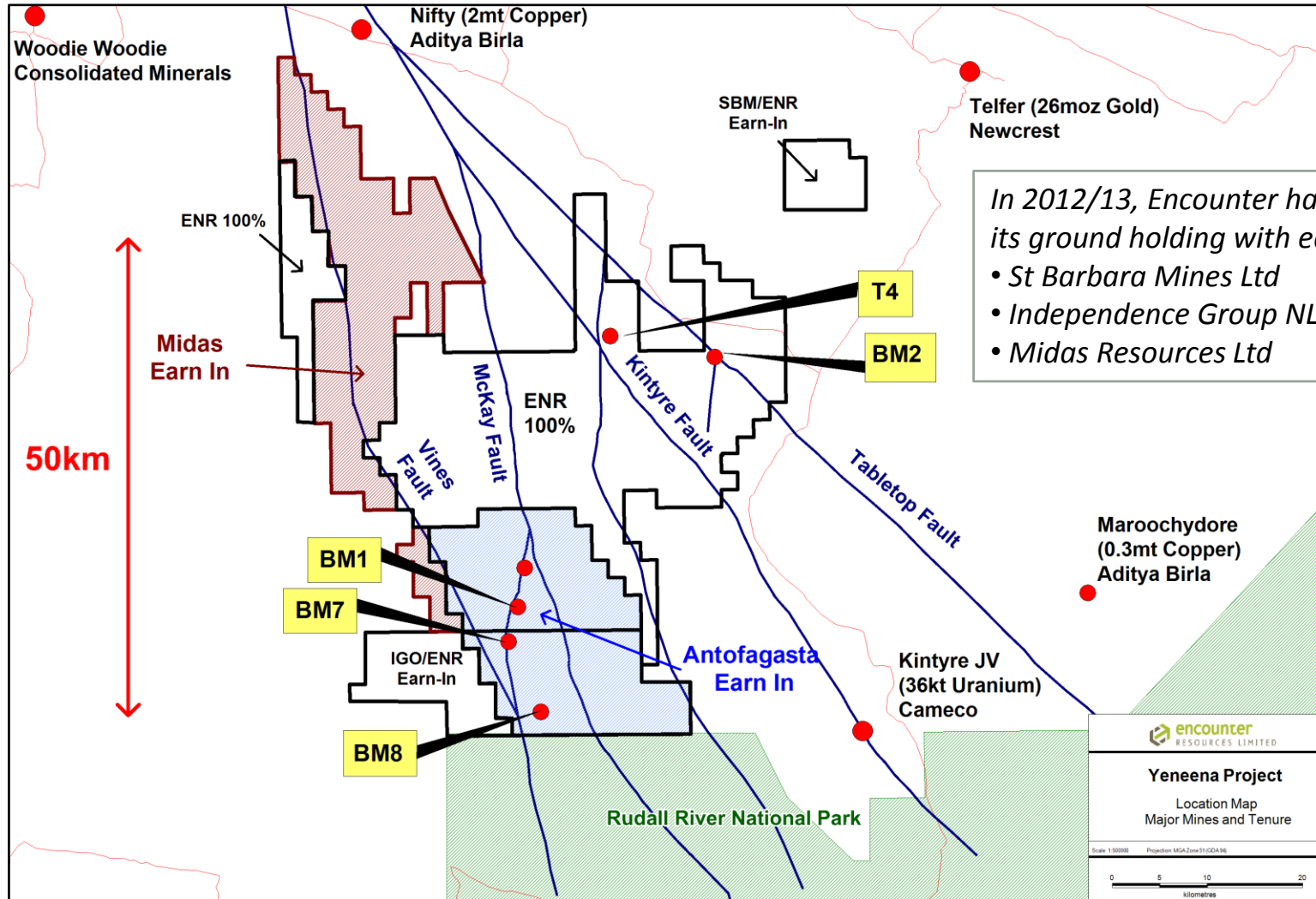
## Cash

A\$4.8m (30 June 2013)



# YENEENA PROJECT

## Major land position amongst giant mineral deposits



# YENEENA PROJECT



**Sand cover has inhibited previous exploration**



# BM1 - BM7 PROSPECTS

## *Copper mineral system 11km long and growing*

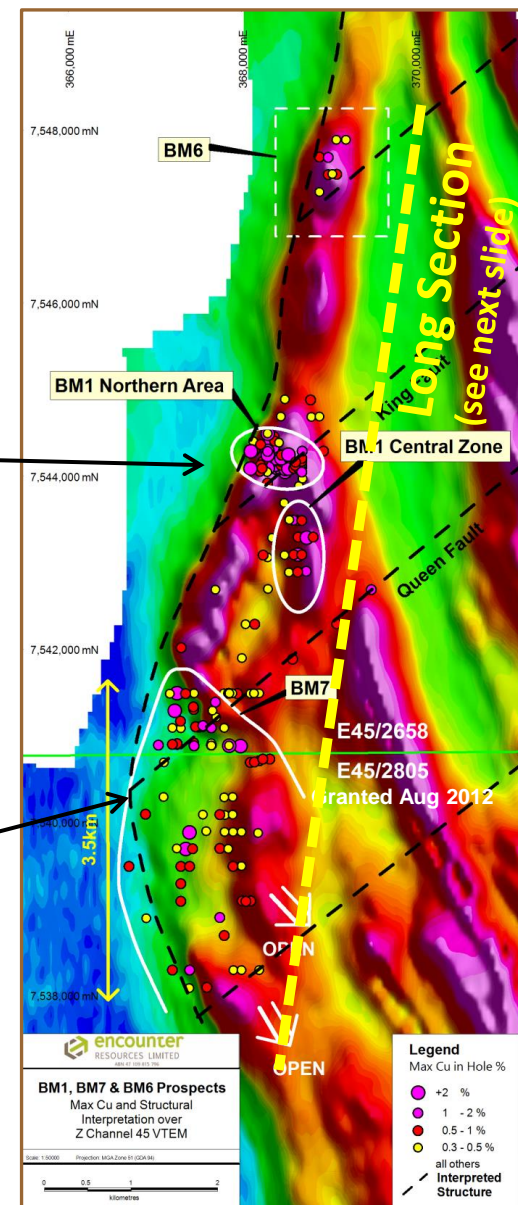
**BM1** - coherent zone of near surface copper oxide mineralisation

- 10m @ 6.8% Cu from 32m
- 20m @ 2.0% Cu from 22m
- 8m @ 3.6% Cu from 18m
- 4m @ 5.5% Cu from 66m

**BM7** - New copper discovery 3km south of BM1 in 2012

- 52m @ 0.6% Cu incl. 8m @ 2.0% Cu
- 9m @ 1.5% Cu, 1.0% Co to EOH
- 34m @ 0.6% Cu incl. 10m @ 1.6% Cu
- 73m @ 0.4% Cu incl. 8m @ 1.0% Cu
- 34m @ 0.5% Cu incl. 14m @ 0.8% Cu

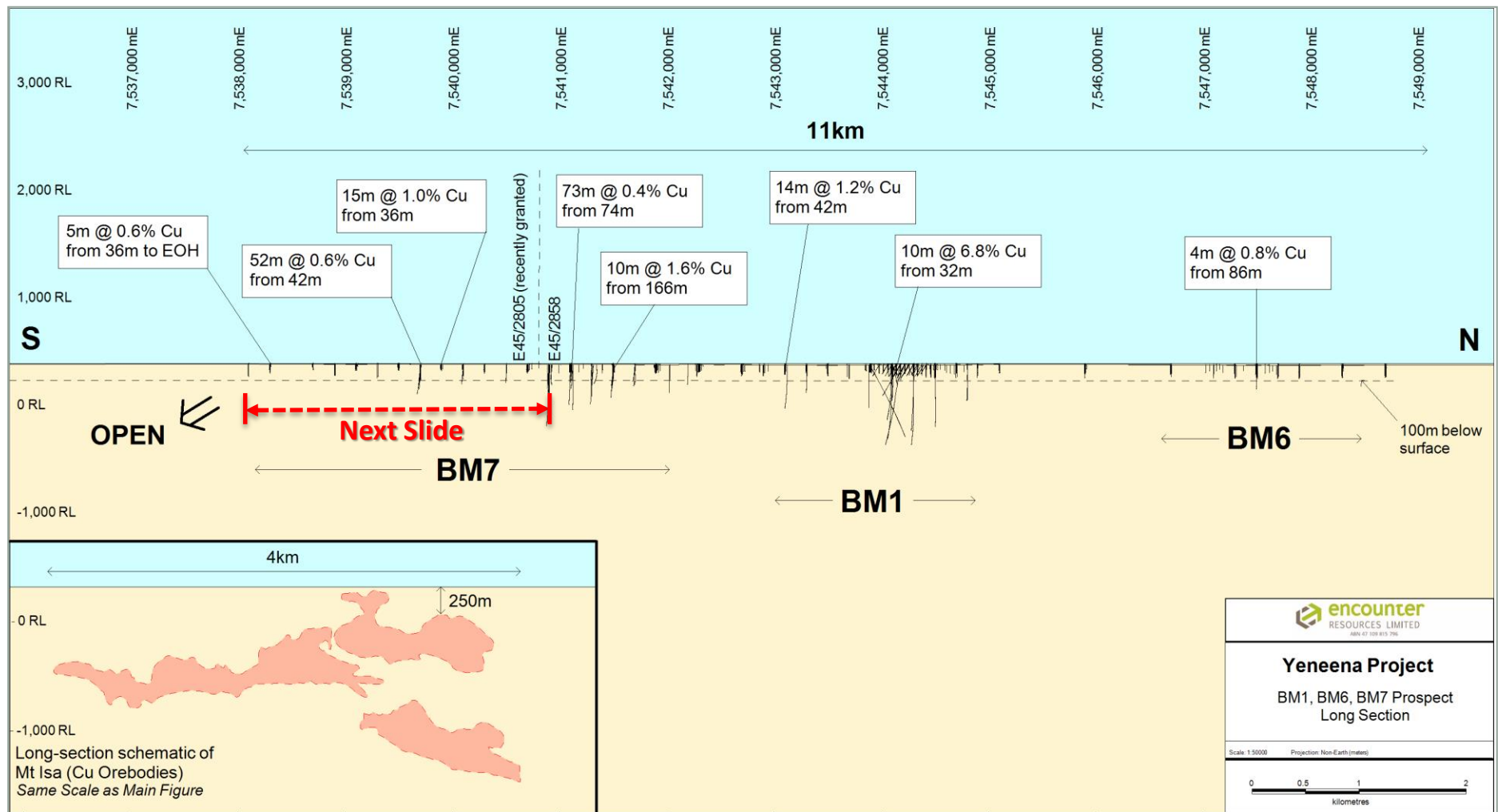
*Antofagasta farming-in*



# LONG SECTION BM1-BM7



## Shallow drilling defines major new Copper-Cobalt mineral system

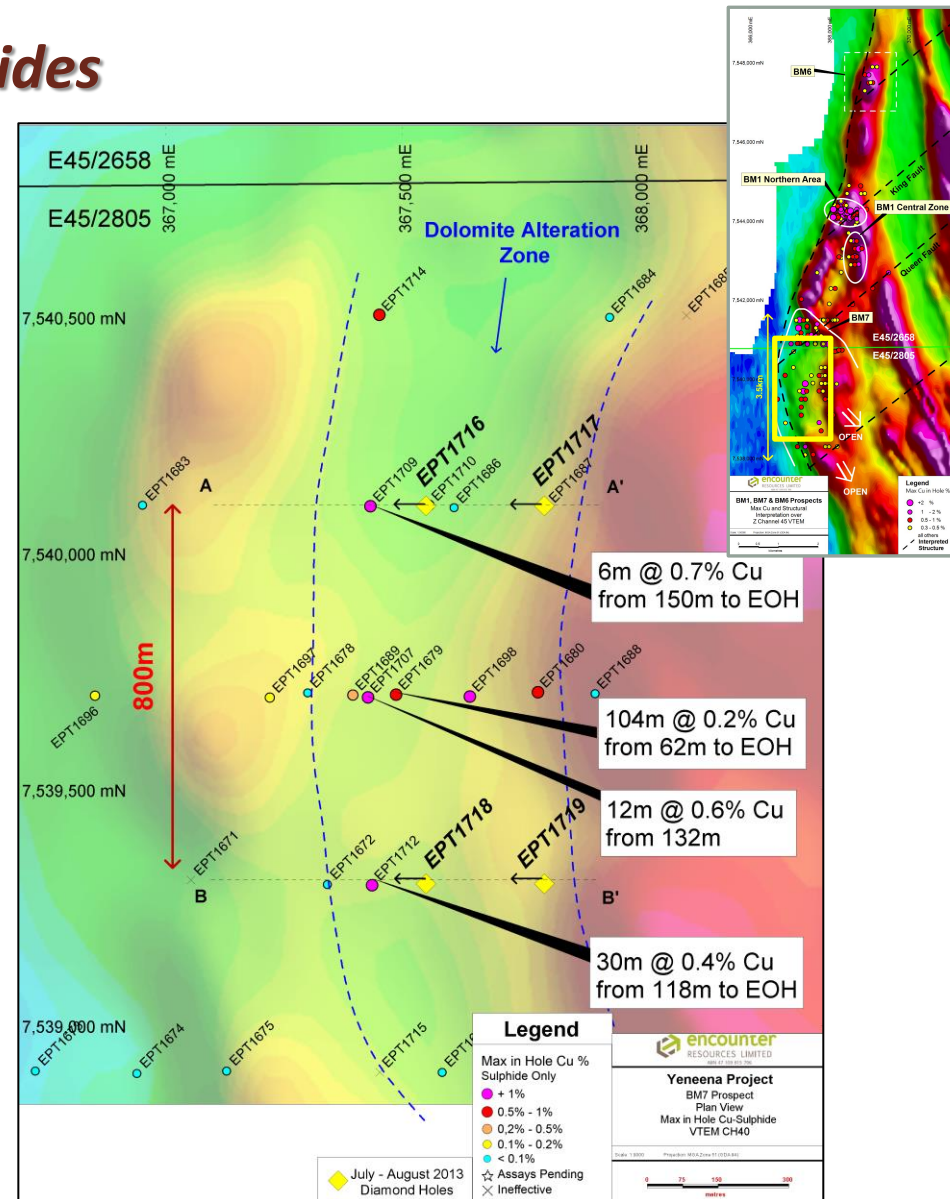


**Antofagasta farming-in**

# BM7 PROSPECT

## +800m Long Zone of Copper Sulphides

- Depth extensive copper sulphide mineralisation associated with large dolomite alteration zone
- End of hole (EOH) primary copper in RC drill program:
  - 6m @ 0.7% Cu 150m to EOH
  - 30m @ 0.4% Cu 118m to EOH
- Copper sulphide zone remains open along strike and at depth
- Diamond drilling in progress





## *Diamond Drilling - Copper Sulphides*

- Three diamond holes have been completed at BM7 - 4th hole in progress
- Copper sulphide mineralisation associated with two easterly dipping, strongly veined and altered carbonate units
- Assay results first hole (EPT 1716)
  - 86m @ 0.2% Cu from 74m to 160m incl.
  - 17m @ 0.5% Cu and 583ppm Co from 108m
- Assays from remaining holes expected in September / October 2013.



EPT1716 – ~120m - Carbonate with dolomite blebs/veins containing chalcopyrite (HQ core width 60mm)

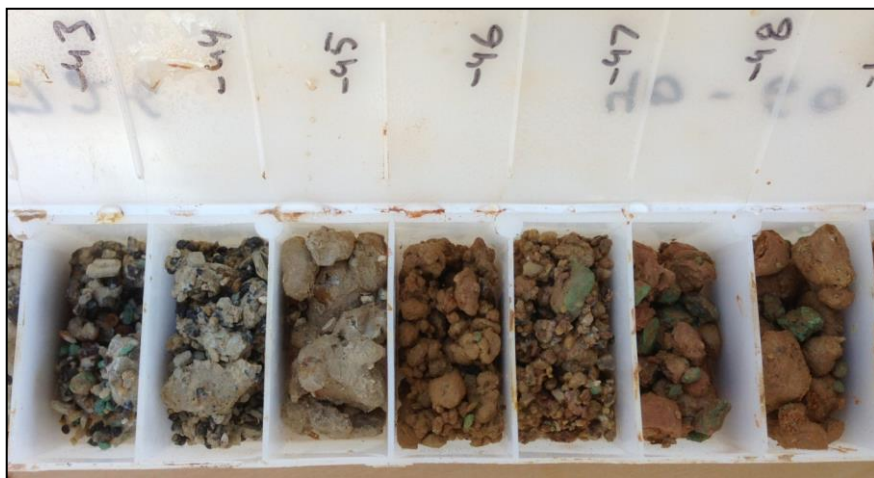


EPT1718 – ~285m - Carbonate/quartz vein containing chalcopyrite and pyrite (NQ core width 45mm)

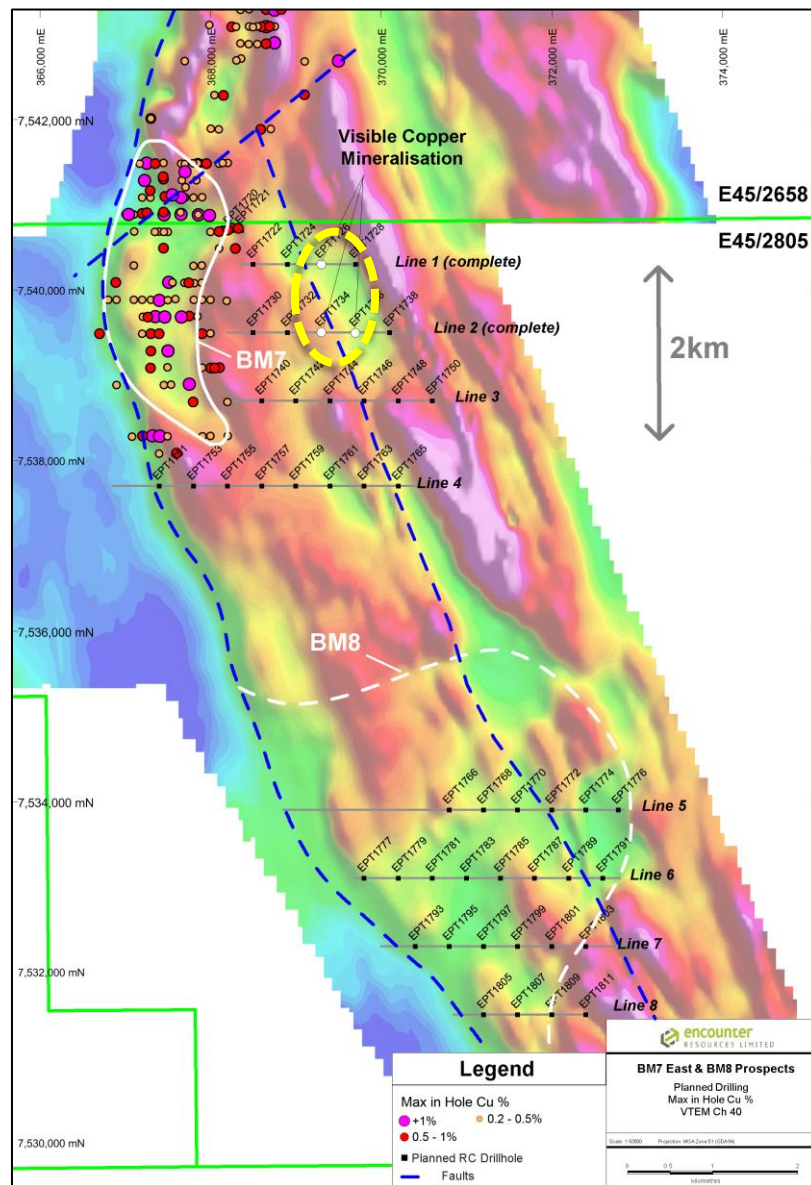
# REGIONAL TARGETS - SOUTH

## *New copper zone 1km East of BM7*

- First pass RC program - drill spacing 800m by 400m (80m hole depth)
- Visible copper mineralisation (confirmed by XRF) in three holes at BM7 East
- BM7 mineral system significantly extended
- BM8 RC drilling in progress



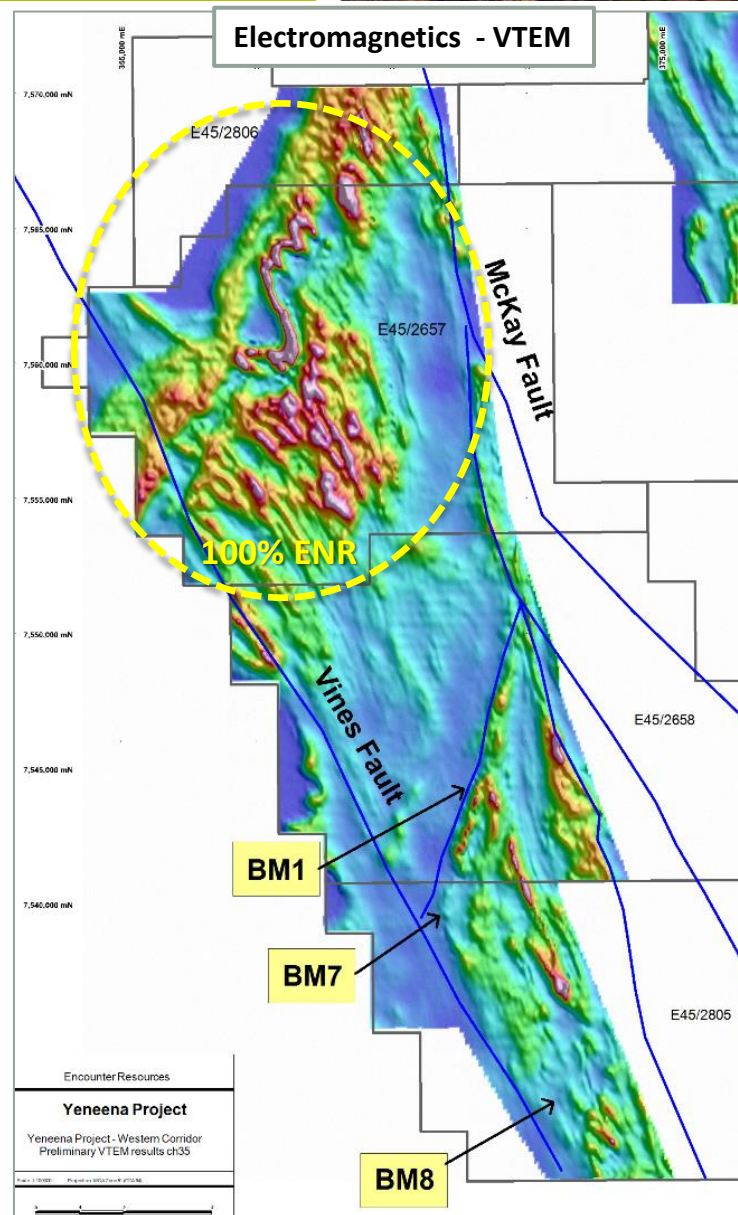
EPT1726 - Copper mineralisation 43-49m (malachite) within leached clays



# REGIONAL TARGETS - NORTH

## *Untested targets north of BM1-BM7*

- Significant north-east trending structure that mirrors the BM1-BM7 copper system
- Key structural targets identified
- Shallow sand cover
- Minimal previous exploration – a handful of RAB holes
- 100% Encounter held ground
- VTEM Survey completed June 2013



# DISCOVERY TIMELINE



**2008-09**

Airborne EM  
Regional geochem  
Target generation

**2010**

Greenfields copper  
oxide discoveries at  
BM1

**2011**

Discovery of copper  
sulphides at BM1

New copper oxide  
discoveries at BM6 & BM7

First BM7 copper sulphides

**2012**

Large scale, copper  
discovery at BM7

Regional copper  
targets defined

**2013 Objectives**

High grade copper  
sulphides at BM7

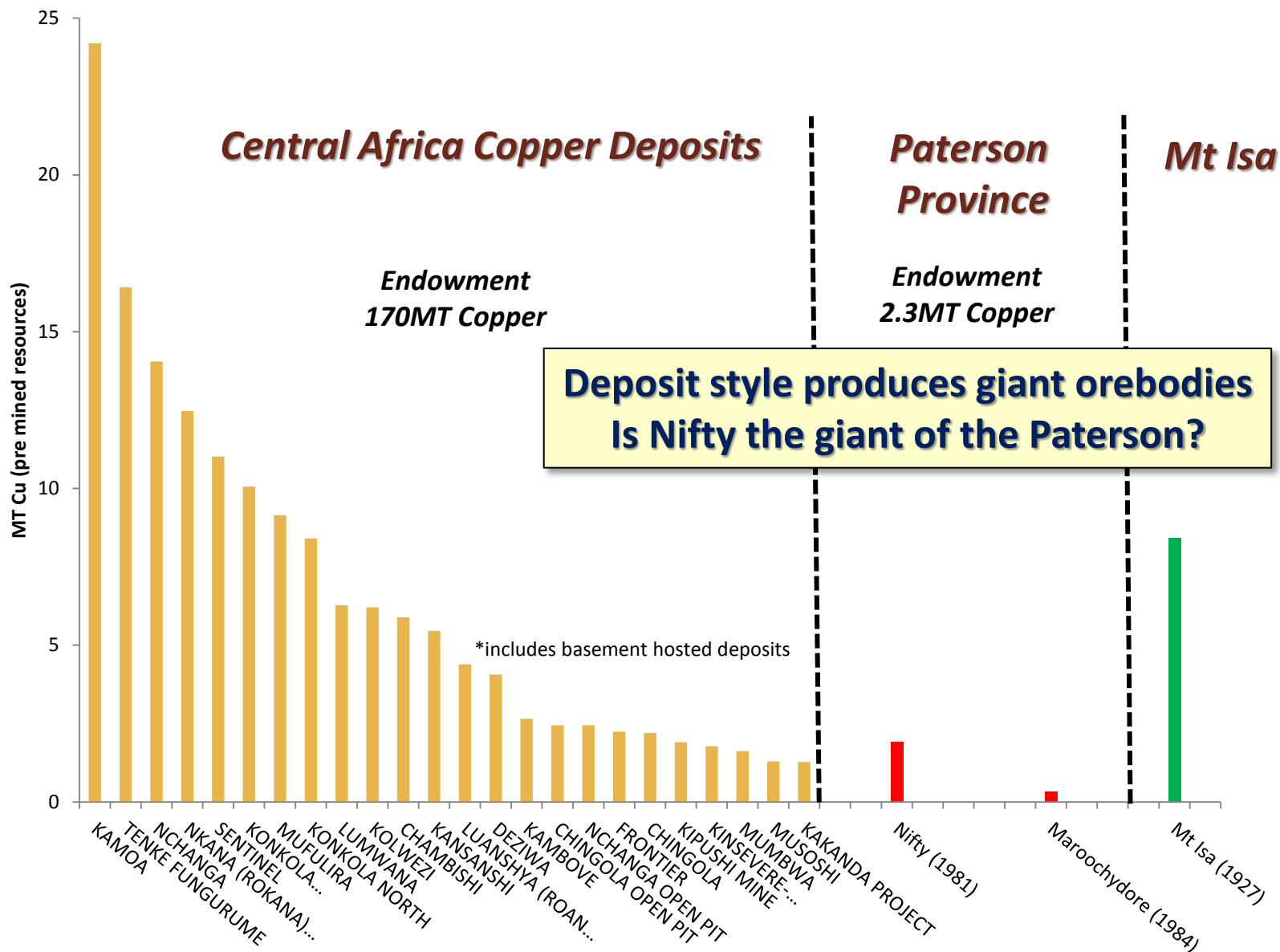
Test targets south  
and east of BM7

Test Regional Targets  
(100% ENR)

Anto.  
Farm-in



# SEDIMENT HOSTED COPPER



## *Yeneena – Australia's Next Great Copper District?*

- *Large scale system over 11km long and growing*
- *High grade near surface intersections*
- *Key ground position secured (>1900km<sup>2</sup>)*
- *First world mining jurisdiction*
- *Major mining company funding through Antofagasta farm-in*
- *Sound cash position*
- *Diamond and RC drilling in progress*

## ***Disclaimer & Compliance Statement***

This presentation has been prepared by Encounter Resources Limited (“Encounter”). The information contained in this presentation is a professional opinion only and is given in good faith. Certain information in this document has been derived from third parties and though Encounter has no reason to believe that it is not accurate, reliable or complete, it has not been independently audited or verified by Encounter.

Any forward-looking statements included in this document involve subjective judgement and analysis and are subject to uncertainties, risks and contingencies, many of which are outside the control of, and maybe unknown to Encounter. In particular, they speak only as of the date of this document, they assume the success of Encounter’s strategies, and they are subject to significant regulatory, business, competitive and economic uncertainties and risks. Actual future events may vary materially from the forward looking statements and the assumptions on which the forward looking statements are based. Recipients of this document (“Recipients”) are cautioned to not place undue reliance on such forward-looking statements.

Encounter makes no representation or warranty as to the accuracy, reliability or completeness of information in this document and does not take responsibility for updating any information or correcting any error or omission which may become apparent after this document has been issued.

To the extent permitted by law, Encounter and its officers, employees, related bodies corporate and agents (“Agents”) disclaim all liability, direct, indirect or consequential (and whether or not arising out of the negligence, default or lack of care of Encounter and/or any of its Agents) for any loss or damage suffered by a Recipient or other persons arising out of, or in connection with, any use or reliance on this presentation or information.

The information in this report that relates to Exploration Results is based on information compiled by Mr. Peter Bewick who is a Member of the Australasian Institute of Mining and Metallurgy. Mr. Bewick is a full time employee of Encounter Resources Ltd and has sufficient experience which is relevant to the style of mineralisation under consideration to qualify as a Competent Person as defined in the 2004 Edition of the 'Australian Code for Reporting of Exploration Results, Mineral Resources and Ore Reserves'. Mr. Bewick consents to the inclusion in the presentation of the matters based on his information in the form and context in which it appears.

