



**encounter**  
RESOURCES LIMITED

**ASX : ENR**

**RIU Explorers Conference  
Fremantle, Australia  
12 February 2008**



# Encounter Resources

- ✓ Track record as an aggressive and successful explorer
- ✓ Board experienced in progressing projects to development
- ✓ Quality base metals projects complement uranium portfolio

# Corporate Information

**Issued Capital:** 69m Ordinary Shares  
2m Employee Options

**Market Cap:** \$24m @ \$0.35/share

**Cash:** \$5.8m

# People

Paul Chapman - Chairman

Will Robinson - Managing Director

Peter Bewick - Exploration Director

Jon Hronsky - Non-Executive Director

Kevin Hart - Company Secretary



*Experienced team of former WMC / BHP Billiton executives*

# Project Portfolio

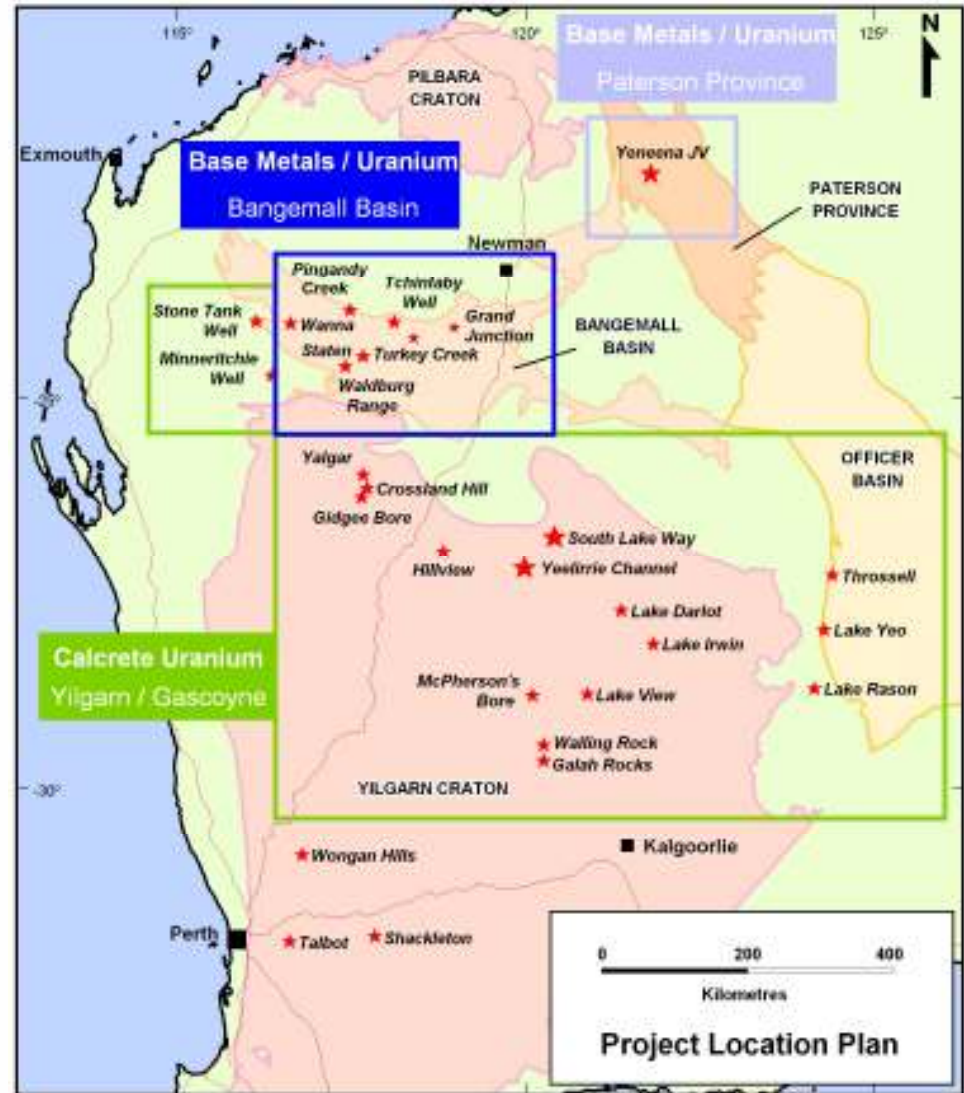
**Calcrete Uranium**

**Yilgarn / Gascoyne**

**Base Metals / Unconformity Uranium**

**Bangemall Basin**

**Paterson Province**



# Project Portfolio

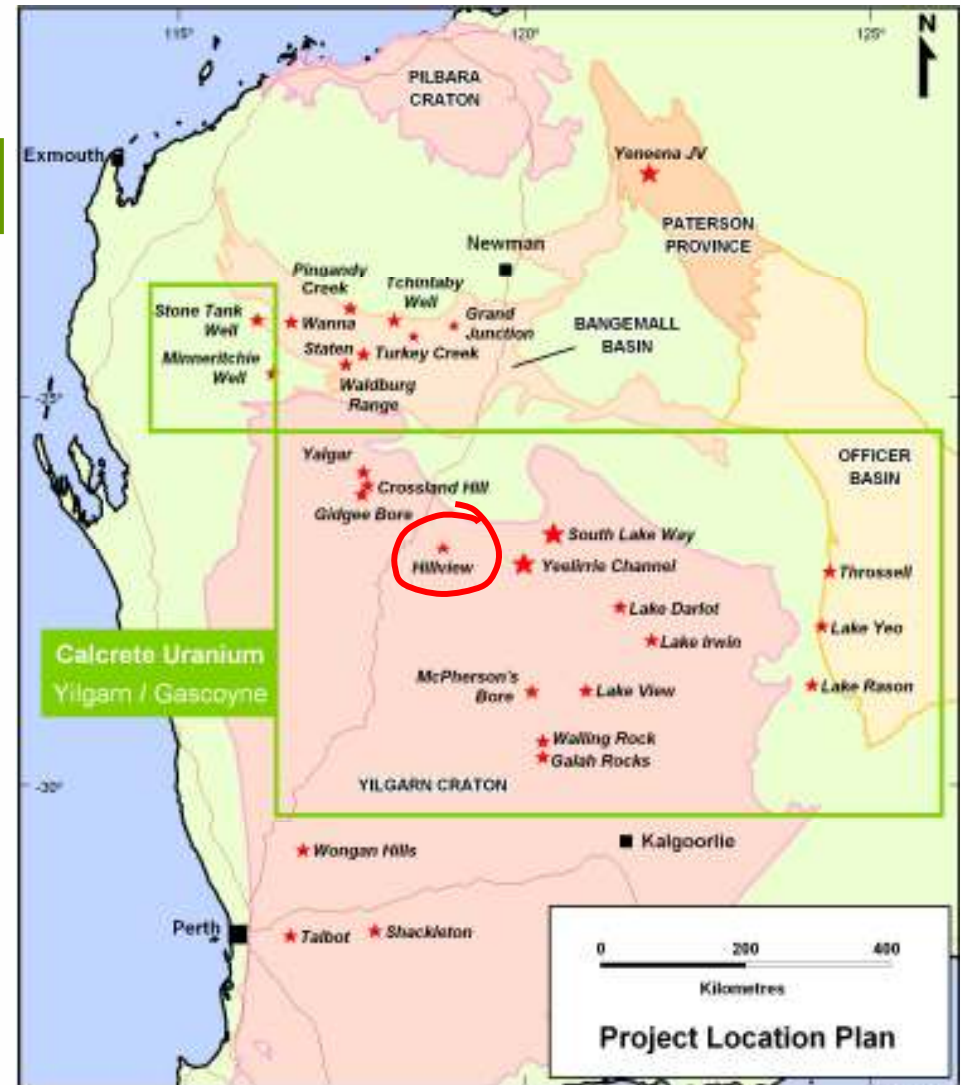
## Calcrete Uranium

*Targeting Surficial uranium in the northern Yilgarn*

- *Near existing quality resources and infrastructure*
- *Low discovery cost*

### Hillview

Large scale, near surface discovery

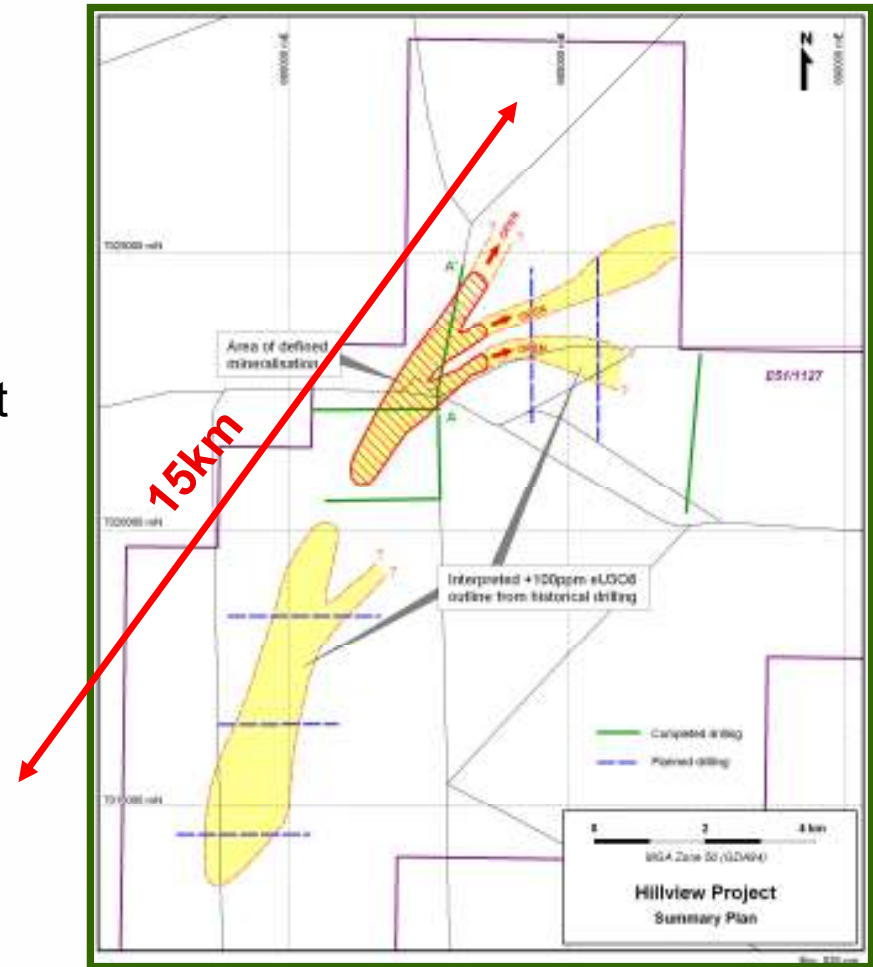


**All calcrete uranium projects Encounter 80% / Avoca 20%,  
except South Lake Way 60% / 40%**

# Hillview Project

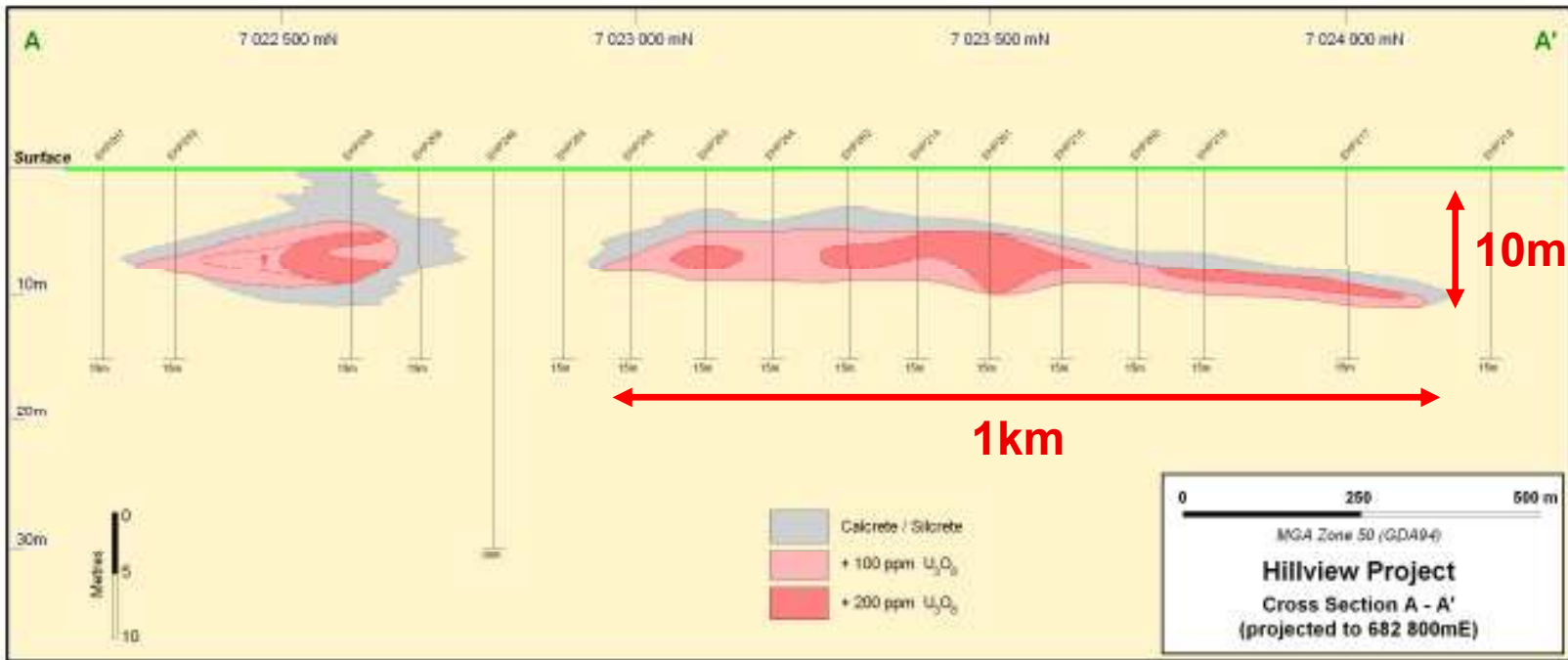
## Potential to host a large near surface uranium deposit

- Coherent uranium mineralisation
- Intersections include:
  - 10m @ 209ppm from surface incl. 6m @ 270ppm  $U_3O_8$
  - 4m @ 287ppm from 6m incl. 3m at 324ppm  $U_3O_8$
- 15km long anomaly, only a small part tested



# Hillview Project

Potential to host a large near surface uranium deposit



Consistent body of mineralisation with no internal dilution. May represent a future bulk mining opportunity.



# Project Portfolio

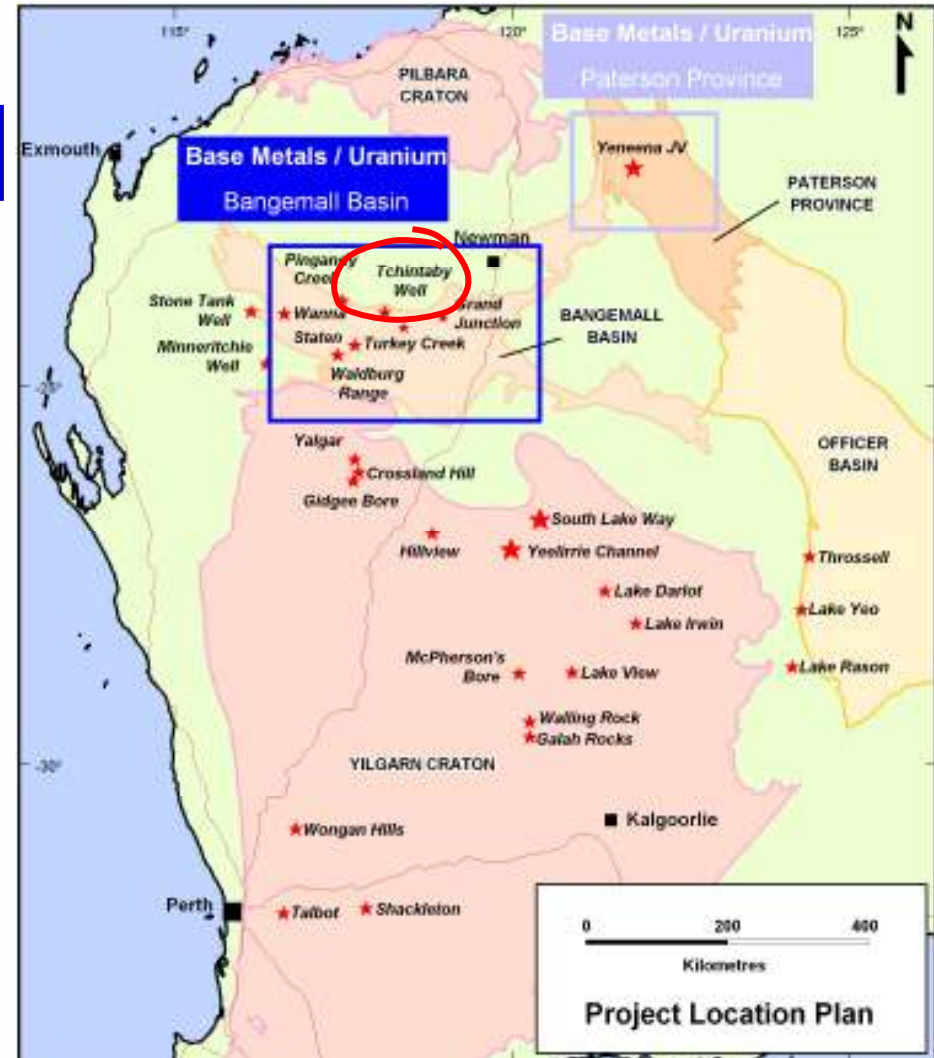
## Base Metals / Unconformity Uranium

*Targeting WA Proterozoic basins for uranium and base metals*

### Bangemall Basin

6 projects over 2,600km<sup>2</sup>

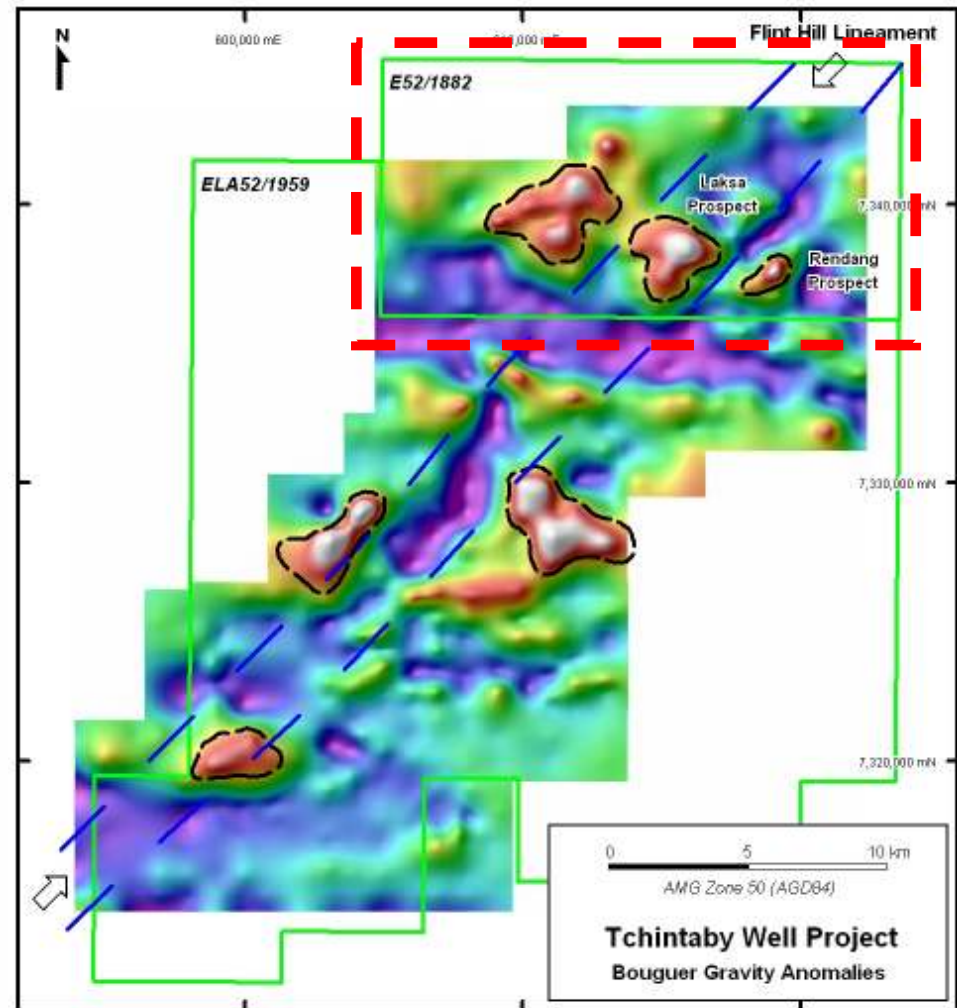
Tchintaby Well – high quality drill targets established



# Tchintaby Well

Large mineralised system with high quality drill targets defined

- Project secured in 2005 to cover regional multi element geochemical anomaly
- Major structural position in Proterozoic basin
- Six excess mass gravity anomalies have been defined adjacent to the regionally extensive Flint Hill Lineament

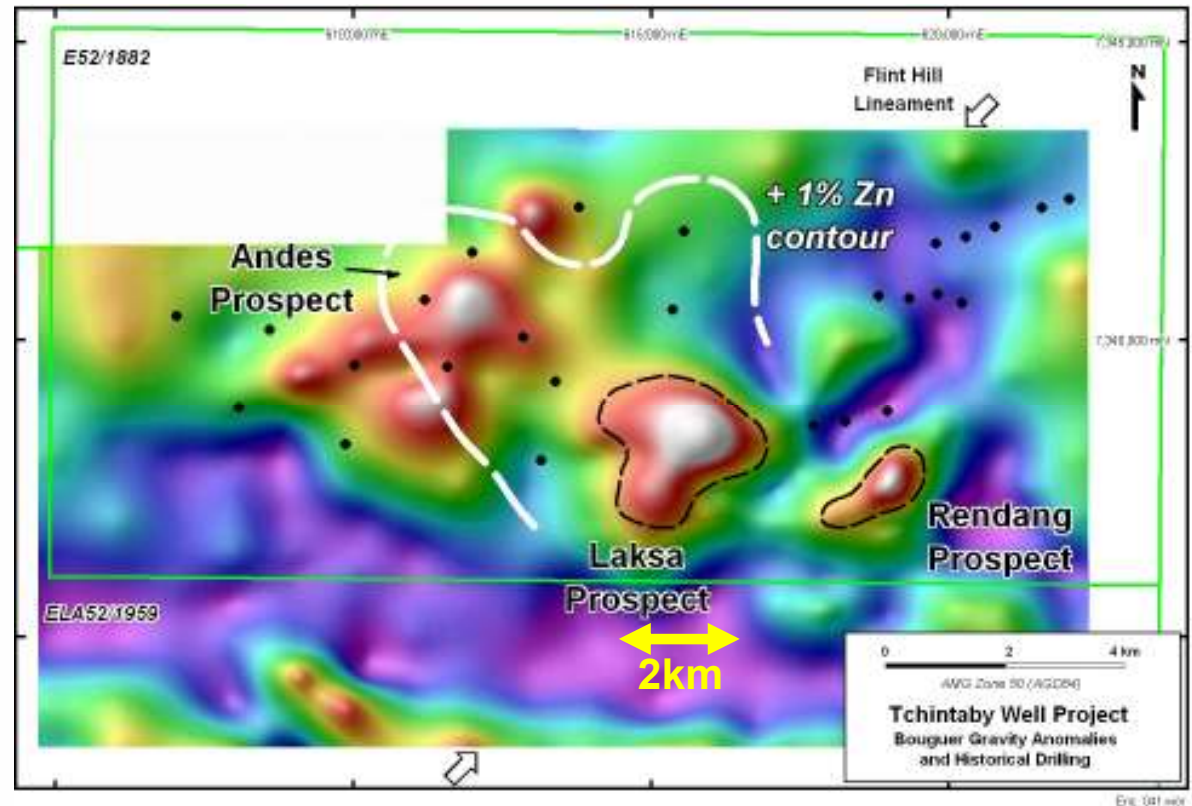


Enc\_042.wor

# Tchintaby Well

Large mineralised system with high quality drill targets defined

- Typical CRA intersections 10 to 15 metres thick :
  - Zn - 0.5 to 1.0%
  - Cu – 500 to 1000ppm
  - Ag - 5 to 15g/t
- Significant mass anomalies immediately south of prior drilling
- 3D modelling indicates target depth 150-250m



Encounter 80% / Avoca 20%

# Project Portfolio

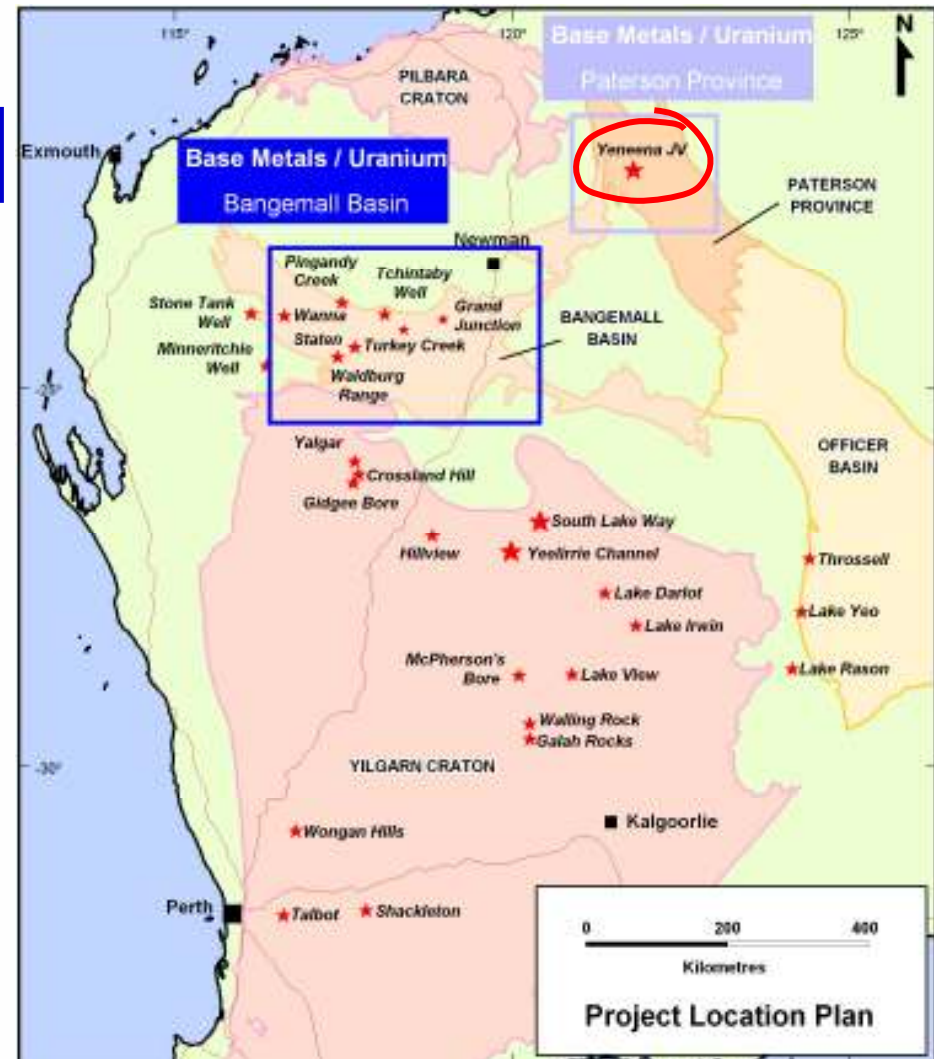
## Base Metals / Unconformity Uranium

*Targeting Proterozoic basins for uranium and base metals*

### Yeneena JV with Barrick Gold

ENR earning 75% interest

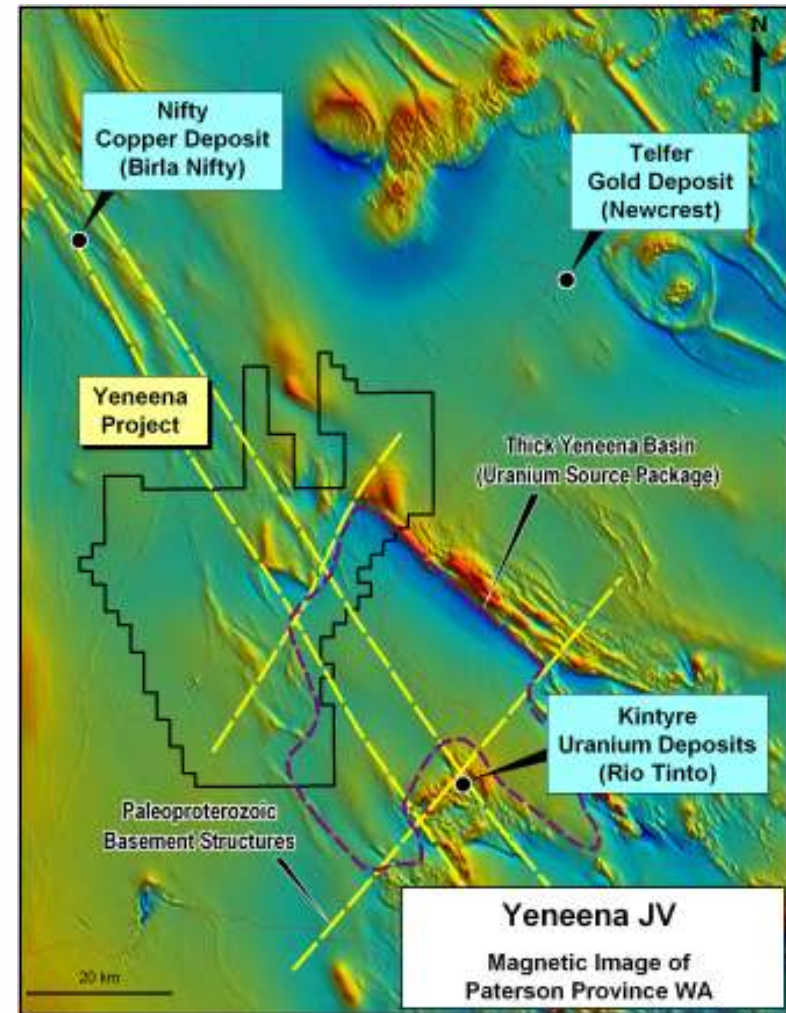
1500 km<sup>2</sup> in under-explored Proterozoic belt hosting three world class mineral deposits



# Paterson Province – Yeneena JV

## World class mineral province for base metals and unconformity uranium

- Key structural position in highly endowed mineral belt
- Basin margin replicates the geological setting that hosts the Kintyre uranium deposits to the south.
- Database of 750 historical drill holes, none were assayed for uranium
- 5000 drill pulps submitted for re-assay for uranium and base metals suite



# Continued Company Growth

## Calcrete Uranium



## Base Metals / Unconformity Uranium





**encounter**  
RESOURCES LIMITED

**ASX : ENR**

**RIU Explorers Conference  
Fremantle, Australia  
12 February 2008**

